



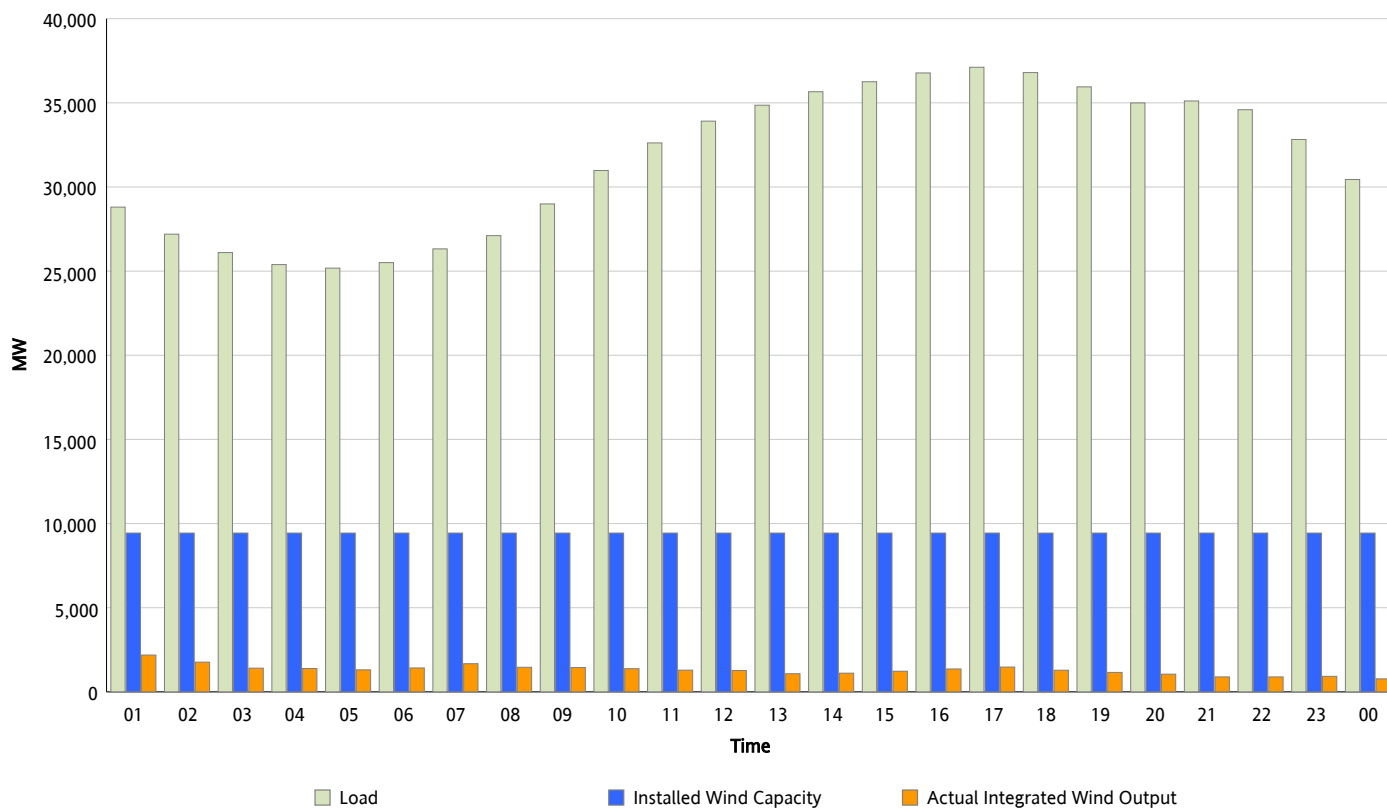
ERCOT Grid Operations

Wind Integration Report : 05/12/2012

Peak Load	37,115 MW
Load Peak Hour (HE)	17
Wind Over Peak	1,475 MW
Wind Record 04/13/12	7,925 MW
Max Wind Value*	2,374 MW
Wind Peak Time	00:00
Wind Integration %	7.97 %

Hourly Average Actual Load vs. Actual Wind Output

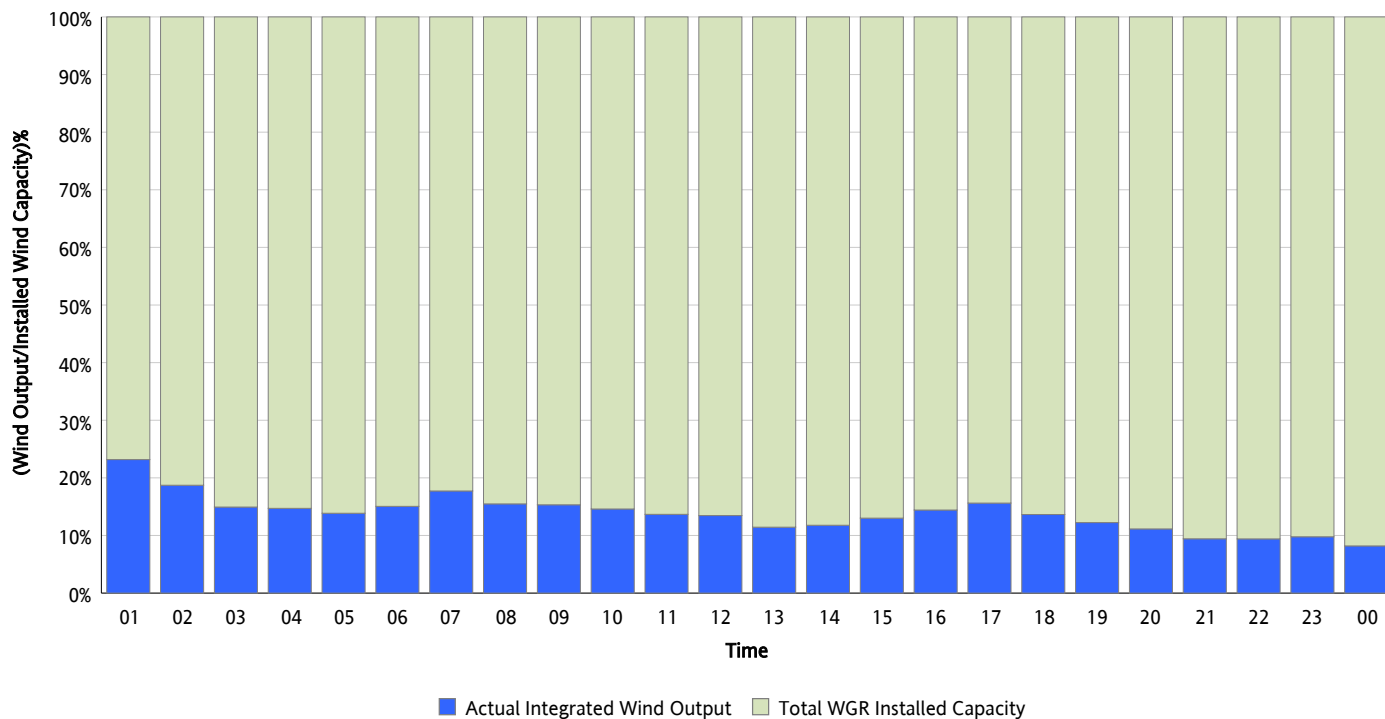
05/12/2012



* Wind Record and Wind Max represent instantaneous values and the rest of the values are integrated over the hour

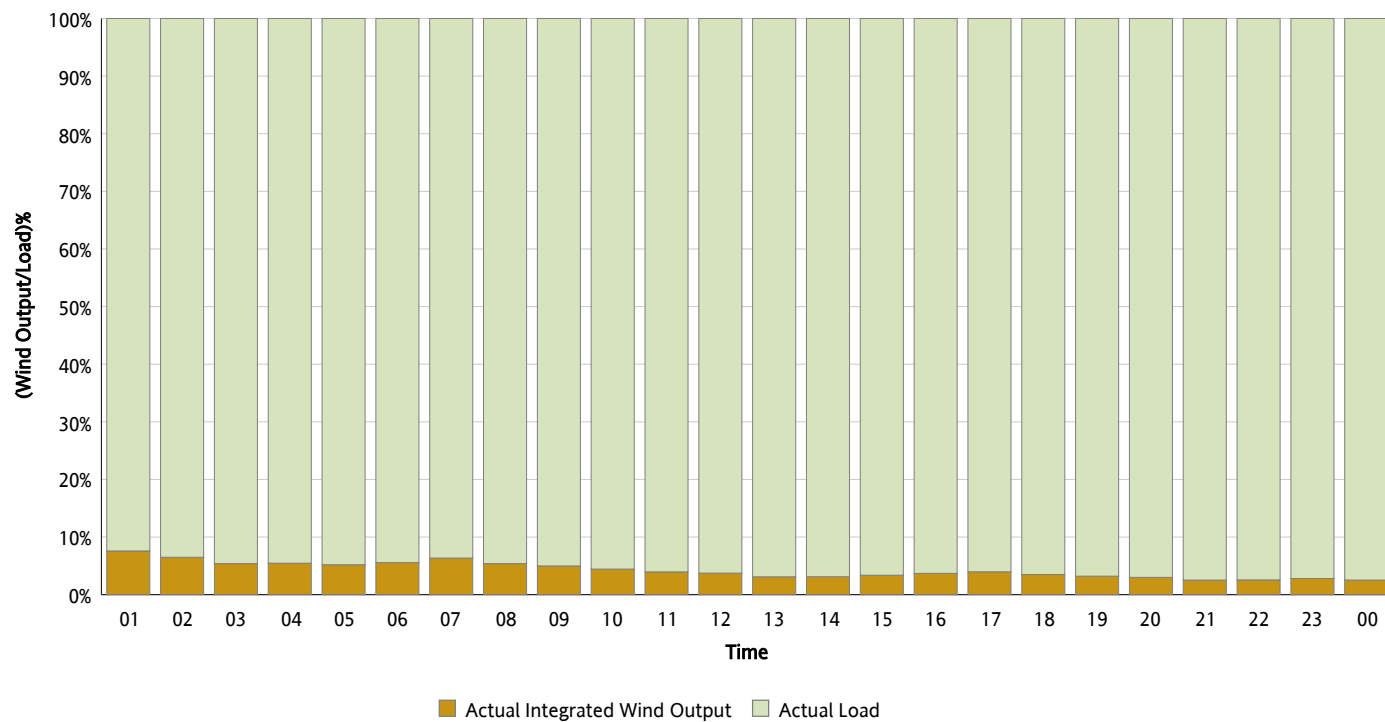
Actual Wind Output as a Percentage of the Total Installed Wind Capacity

05/12/2012



Actual Wind Output as a Percentage of the ERCOT Load

05/12/2012



ERCOT Load vs. Actual Wind Output

05/05/2012 - 05/12/2012

